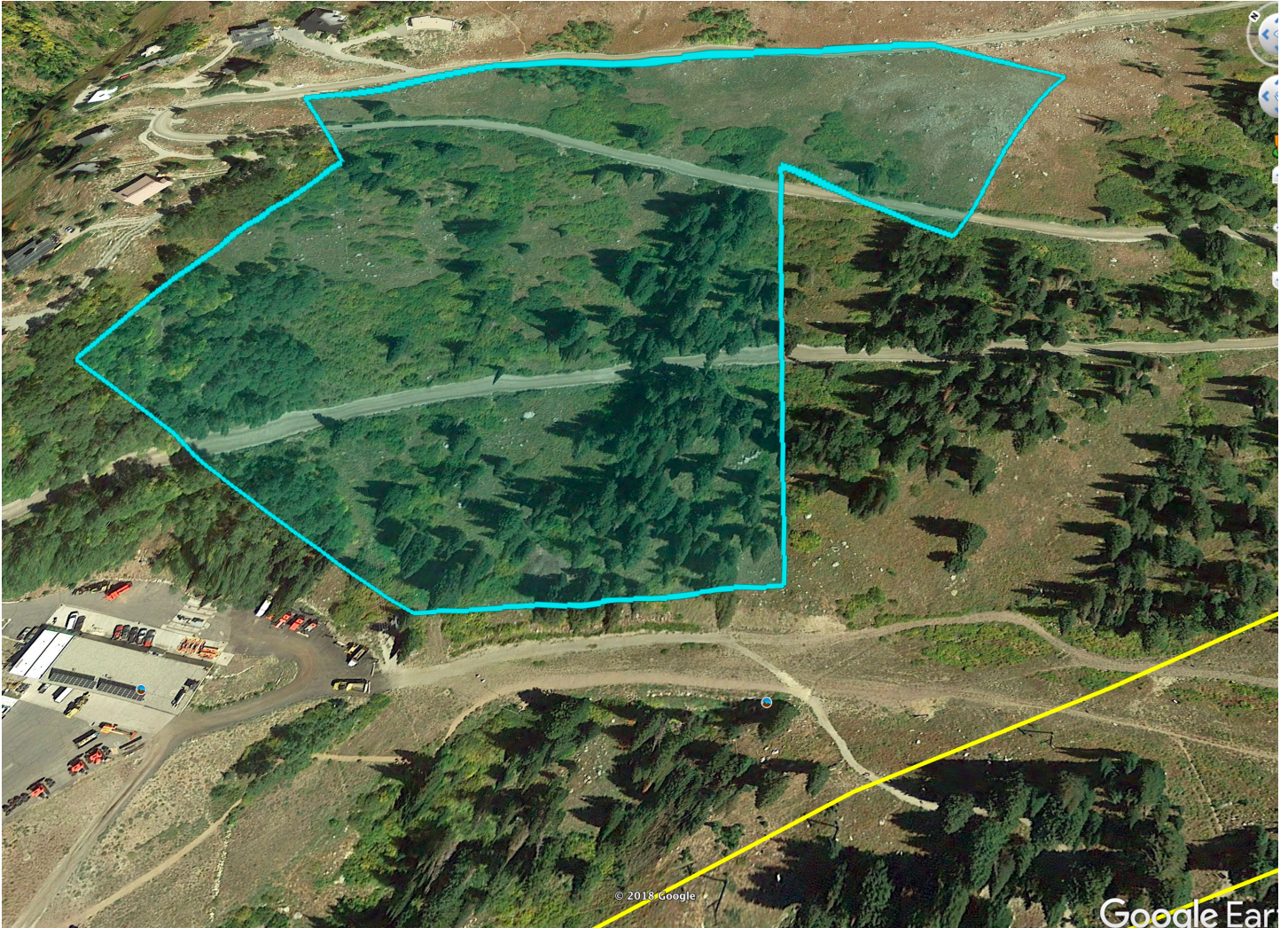
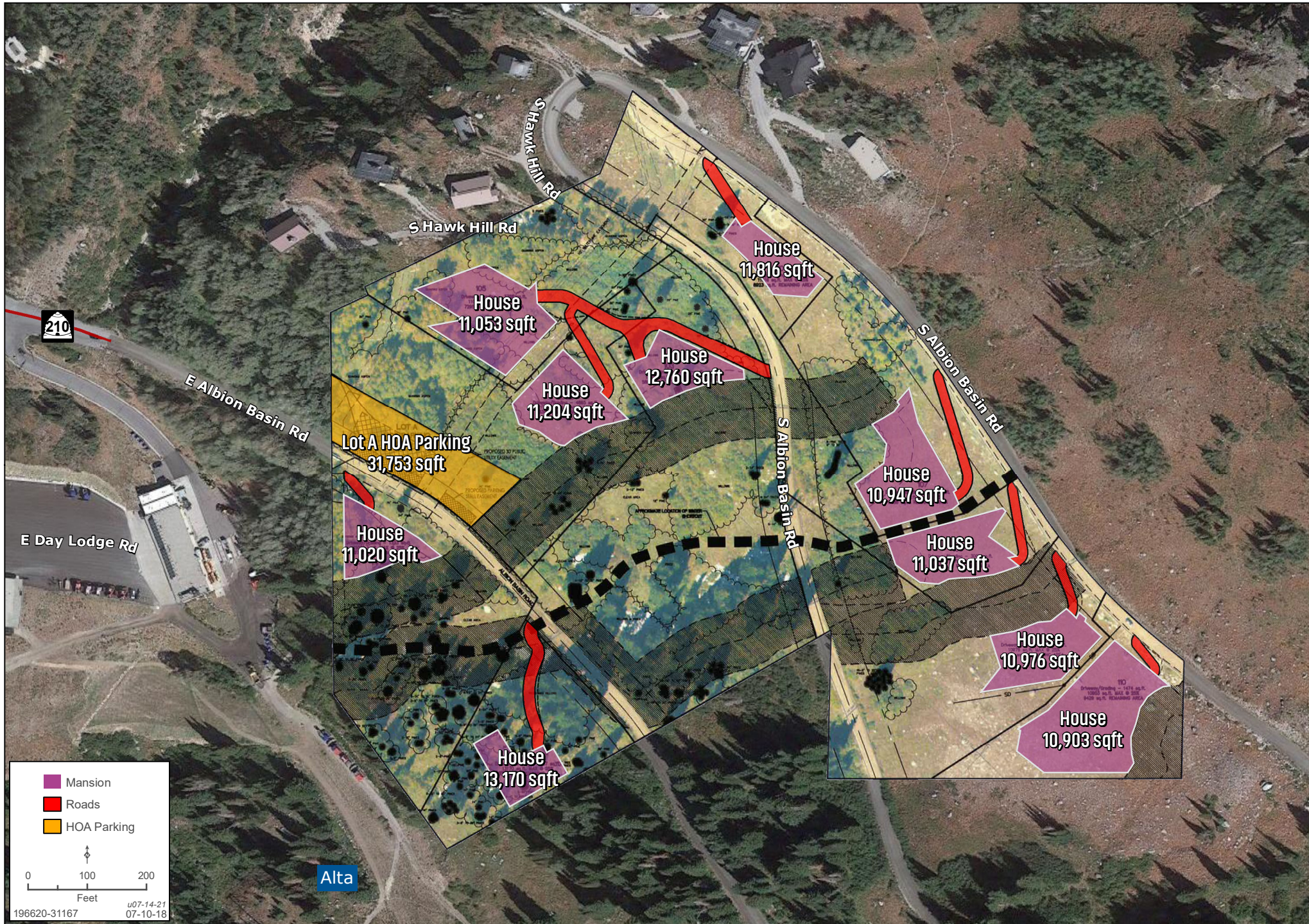


Patsey Marley Development Alternatives 7-14-21



10 MANSION HOMES | ALTA

Zachary Hartman | 801.704.1626 | www.landadvisors.com



LOCATED IN THE NORTHWEST QUARTER OF SECTION 4
TOWNSHIP 3 SOUTH RANGE 3 EAST, SALT LAKE BASE & MERIDIAN
ALTA TOWN, SALT LAKE COUNTY, UTAH



SALT LAKE COUNTY RECORDER

ENTRY NO. _____ REEFNO. _____
FILED FOR RECORD AND RECORDED THE _____
DAY OF _____ 20 _____ AT _____
IN BOOK _____ OF _____

COUNTY RECORDER
BY: _____ DEPUTY

				Project Number		No.	SALT LAKE VALLEY HEALTH DEPARTMENT		SERVICE AREA NO. 3		COMCAST		CENTURYLINK		UNITED FIBRE AUTHORITY		ALTA TOWN	
				18030093		EW	APPROVED THIS _____ DAY OF _____		APPROVED THIS _____ DAY OF _____		APPROVED THIS _____ DAY OF _____		APPROVED THIS _____ DAY OF _____		APPROVED THIS _____ DAY OF _____		APPROVED THIS _____ DAY OF _____	
				Ranoma			A.D. 20 _____		A.D. 20 _____		A.D. 20 _____		A.D. 20 _____		A.D. 20 _____		A.D. 20 _____	
				Designed By		Drawn By												
				JBY		JBY												
				Checked By		DATE												
				GAC		20/4/14	REPRESENTATIVE		REPRESENTATIVE		REPRESENTATIVE		REPRESENTATIVE		REPRESENTATIVE		REPRESENTATIVE	
No.	Revisions	By	Date															







View from Snow Pine Inn

Google Earth



1937 12/2020 2020

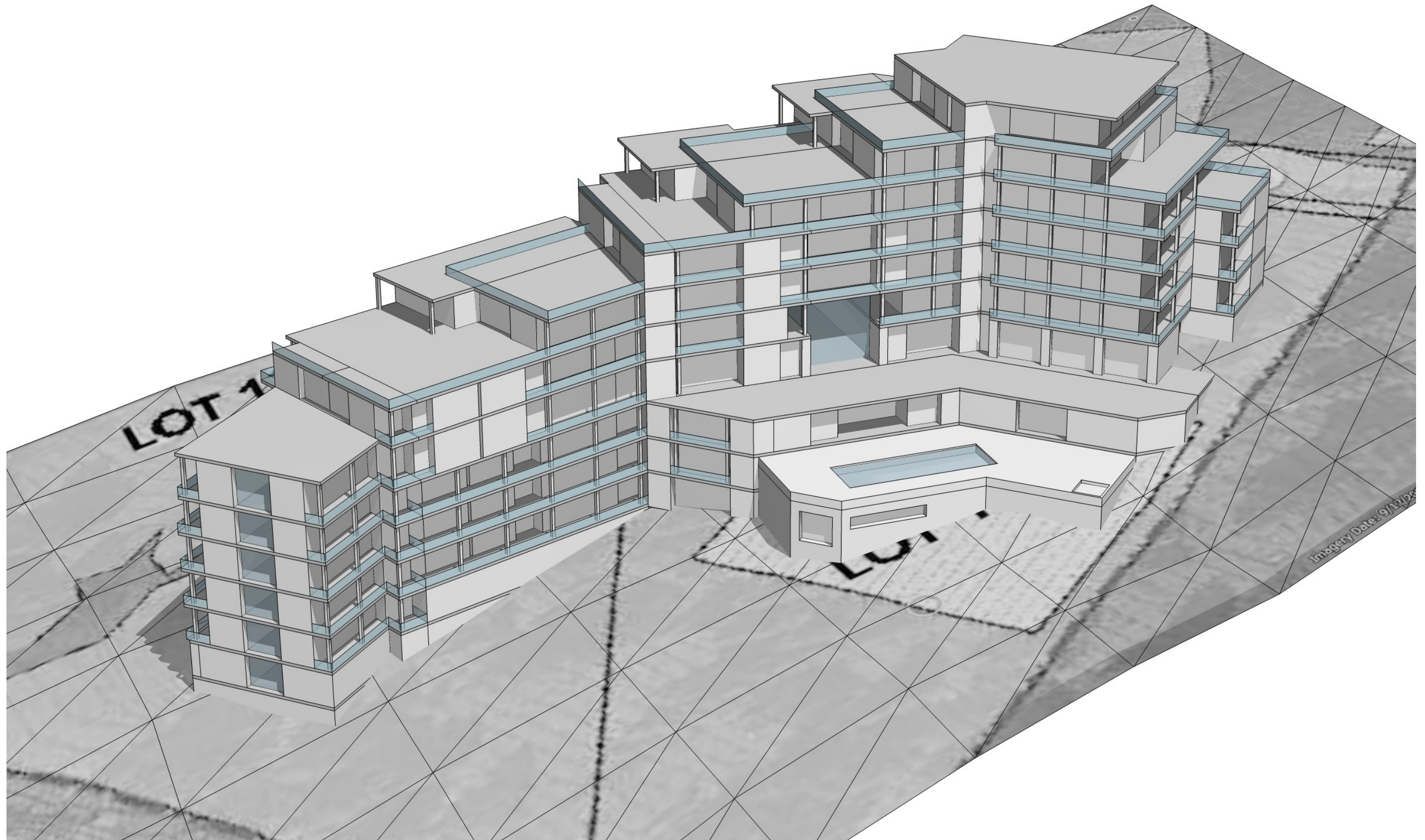


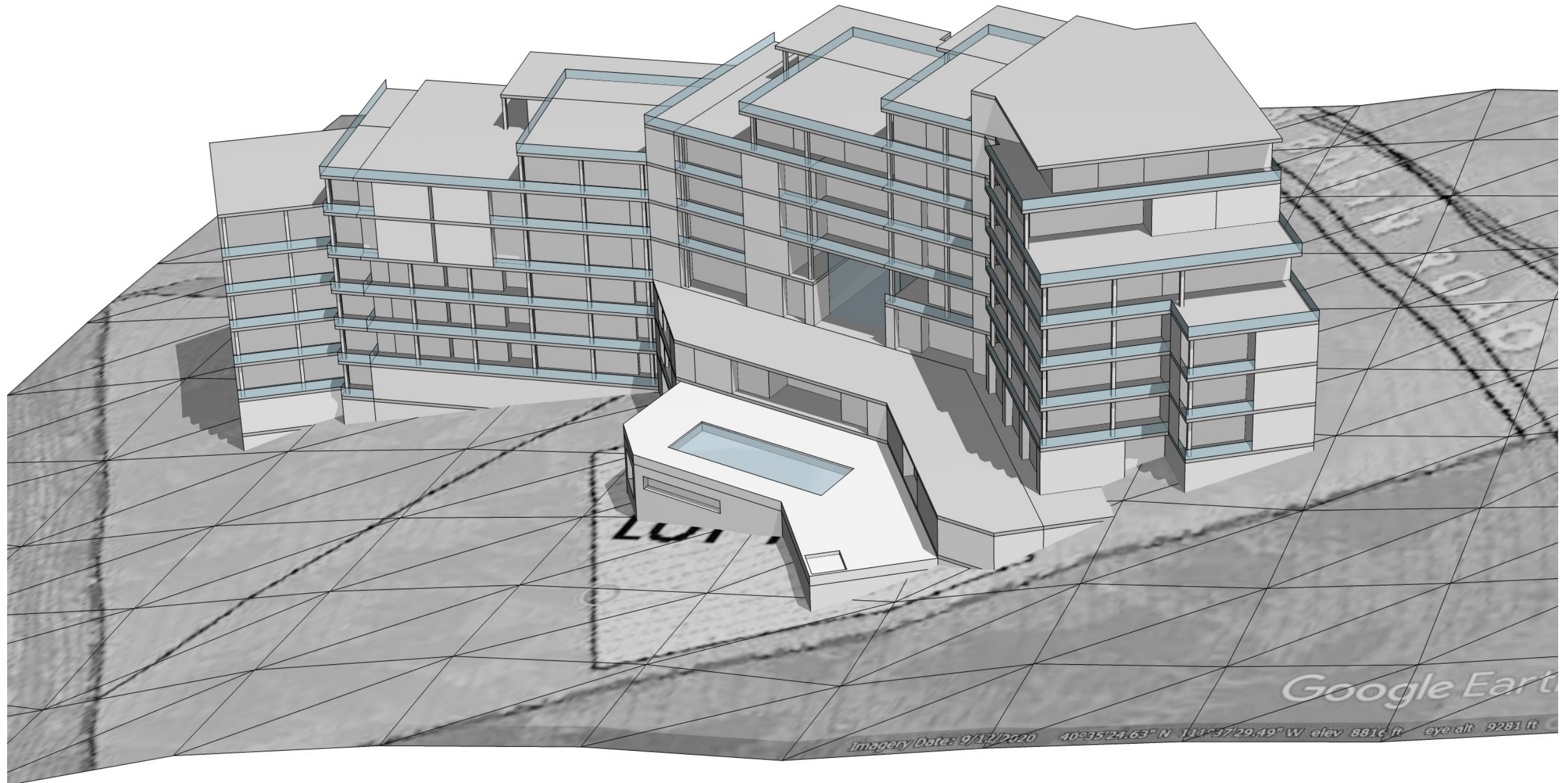
Image Landsat / Copernicus

Google Earth

40°35'21.50" N 111°37'25.05" W elev 8879 ft eye alt 9276 ft

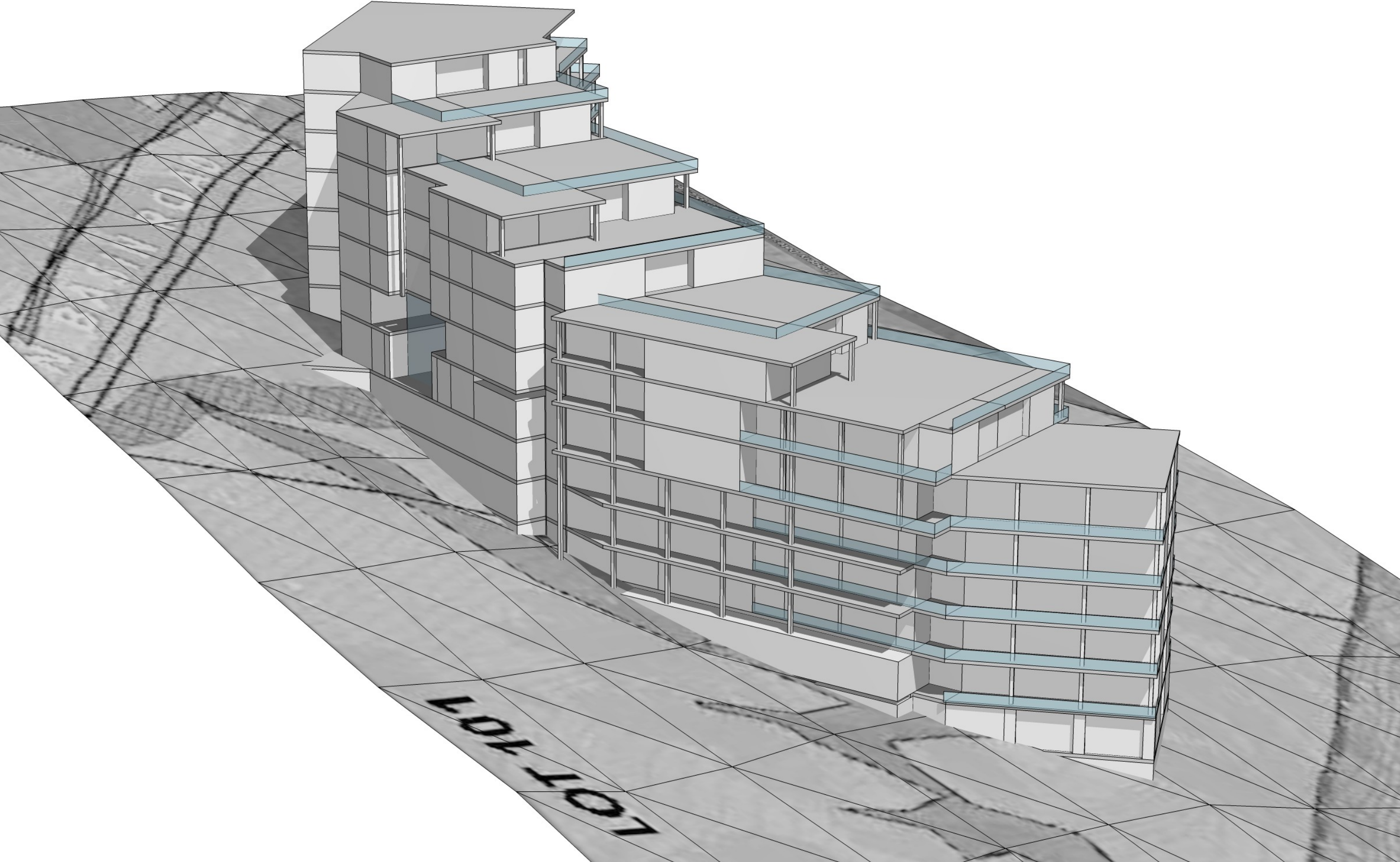
Patsey Marley - Condo-Hotel Alternative
7-14-21





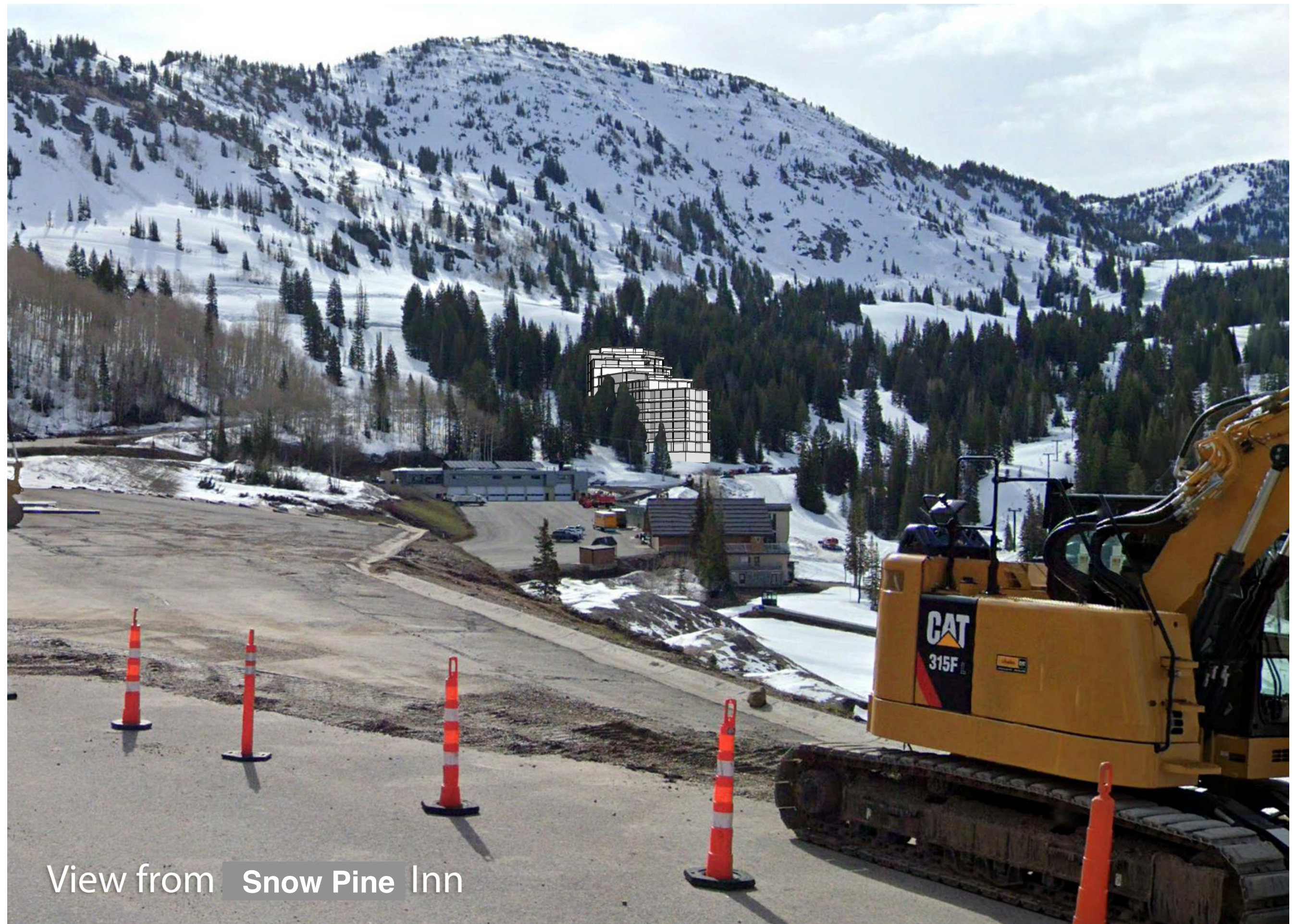
Google Earth

Imagery Date: 9/12/2020 40°35'24.63" N 111°37'29.49" W elev 8816 ft eye alt 9281 ft





View from Town Hall



View from Snow Pine Inn



View from Albion Lodge

