

TOWNSHIP 3 SOUTH, RANGE 3 EAST, OF THE SALT LAKE MERIDIAN, UTAH

DEPENDENT RESURVEY AND METES-AND-BOUNDS SURVEY

ENLARGEMENT

LOT 3, PARCELS 3 AND 4  
TRIPLE SCALE

SEC. 32  
T. 2 S.  
T. 3 S.  
SEC. 6

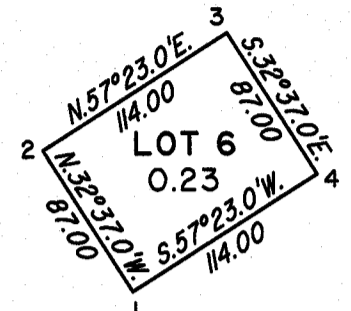
1/4 SEC. COR.  
SEC. 32 ONLY

Lat. 40°35'36.668" N.  
Long. 111°38'07.541" W.  
N.A.D. 83 (2011)  
EPOCH: 2010.00

1/4 SEC. COR.  
SEC. 5 ONLY

TIE ONLY  
S.89°17.2'E.  
1026.75

U.S.M.M. No. 3

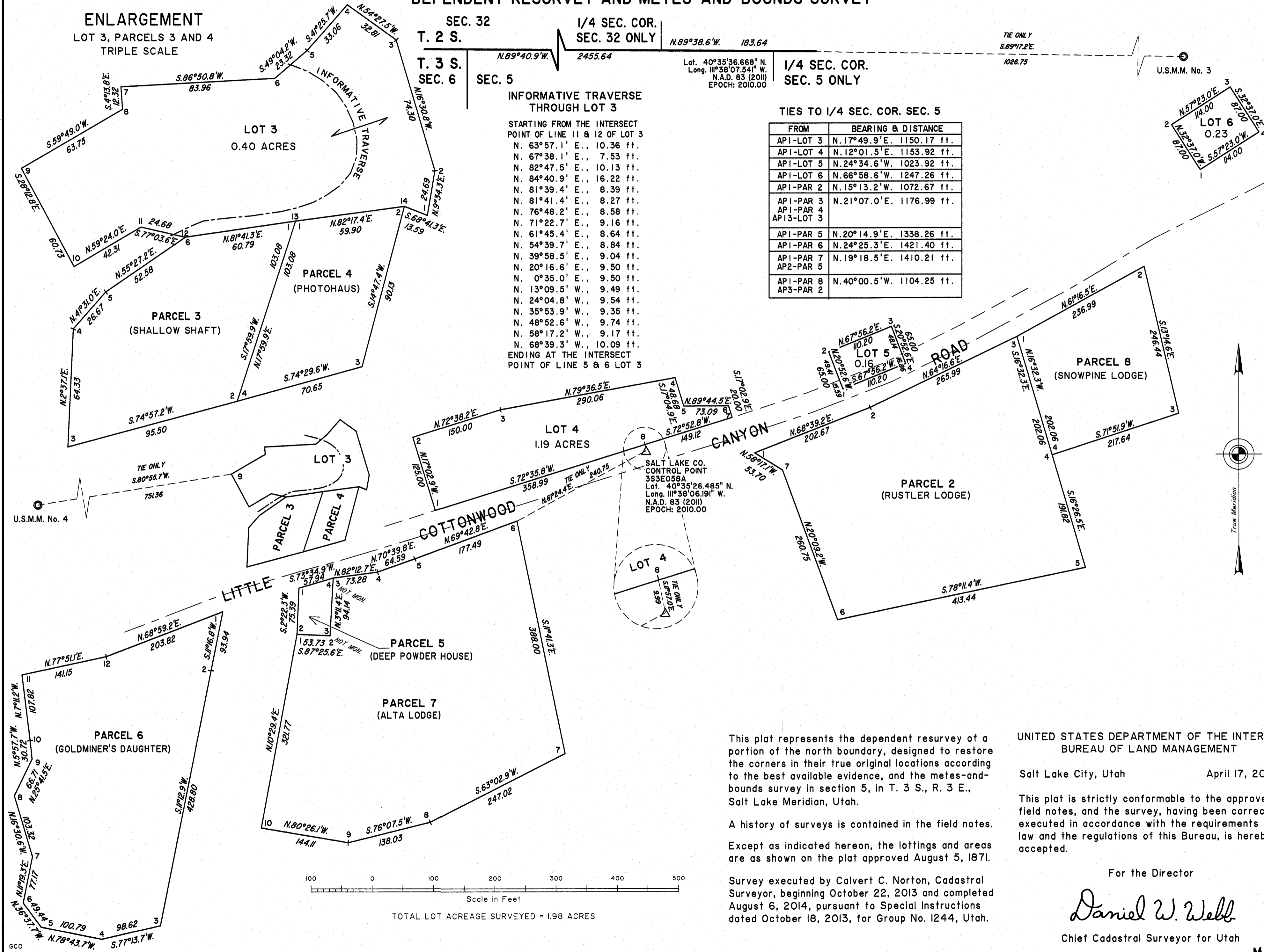


INFORMATIVE TRAVERSE  
THROUGH LOT 3

STARTING FROM THE INTERSECT  
POINT OF LINE 11 & 12 OF LOT 3  
N. 63°57.1' E., 10.36 ft.  
N. 67°38.1' E., 7.53 ft.  
N. 82°47.5' E., 10.13 ft.  
N. 84°40.9' E., 16.22 ft.  
N. 81°39.4' E., 8.39 ft.  
N. 81°41.4' E., 8.27 ft.  
N. 76°48.2' E., 8.58 ft.  
N. 71°22.7' E., 9.16 ft.  
N. 61°45.4' E., 8.64 ft.  
N. 54°39.7' E., 8.84 ft.  
N. 39°58.5' E., 9.04 ft.  
N. 20°16.6' E., 9.50 ft.  
N. 0°35.0' E., 9.50 ft.  
N. 13°09.5' W., 9.49 ft.  
N. 24°04.8' W., 9.54 ft.  
N. 35°53.9' W., 9.35 ft.  
N. 48°52.6' W., 9.74 ft.  
N. 58°17.2' W., 9.17 ft.  
N. 68°39.3' W., 10.09 ft.  
ENDING AT THE INTERSECT  
POINT OF LINE 5 & 6 LOT 3

TIES TO 1/4 SEC. COR. SEC. 5

FROM	BEARING & DISTANCE
API-LOT 3	N. 17°49.9'E. 1150.17 ft.
API-LOT 4	N. 12°01.5'E. 1153.92 ft.
API-LOT 5	N. 24°34.6'W. 1023.92 ft.
API-LOT 6	N. 66°58.6'W. 1247.26 ft.
API-PAR 2	N. 15°13.2'W. 1072.67 ft.
API-PAR 3	N. 21°07.0'E. 1176.99 ft.
API-PAR 4	N. 21°07.0'E. 1176.99 ft.
API-PAR 5	N. 20°14.9'E. 1338.26 ft.
API-PAR 6	N. 24°25.3'E. 1421.40 ft.
API-PAR 7	N. 19°18.5'E. 1410.21 ft.
API-PAR 8	N. 40°00.5'W. 1104.25 ft.



SALT LAKE CO.  
CONTROL POINT  
553E058A  
Lot. 40°35'26.485" N.  
Long. 111°38'06.191" W.  
N.A.D. 83 (2011)  
EPOCH: 2010.00

This plat represents the dependent resurvey of a portion of the north boundary, designed to restore the corners in their true original locations according to the best available evidence, and the metes-and-bounds survey in section 5, in T. 3 S., R. 3 E., Salt Lake Meridian, Utah.

A history of surveys is contained in the field notes. Except as indicated hereon, the lottings and areas are as shown on the plat approved August 5, 1871.

Survey executed by Calvert C. Norton, Cadastral Surveyor, beginning October 22, 2013 and completed August 6, 2014, pursuant to Special Instructions dated October 18, 2013, for Group No. 1244, Utah.

UNITED STATES DEPARTMENT OF THE INTERIOR  
BUREAU OF LAND MANAGEMENT

Salt Lake City, Utah April 17, 2015

This plat is strictly conformable to the approved field notes, and the survey, having been correctly executed in accordance with the requirements of law and the regulations of this Bureau, is hereby accepted.

For the Director

*Daniel W. Webb*

Chief Cadastral Surveyor for Utah

MJK