



Alta Commercial Core

Active Transportation Implementation

Project Update | February 16, 2018



Design Objectives

- ✓ Accommodate **bike and pedestrian use**
- ✓ Manage **vehicle speeds** to promote safe atmosphere
- ✓ Provide **beautification** and **way-finding** opportunities
- ✓ Preserve or optimize **on-street parking**
- ✓ Compatible with **snow removal operations**
- ✓ **Socially activate** town core

COMMENTS:

- "Pedestrian connections to other areas that make sense for locals (or as a pedestrian who left vehicles at home) e.g. Post office"
- "Put walkway on north side"
- "Should traffic calming / bulb-outs start where destination traffic goes (OLS)." *This comment suggests consideration of traffic calming features near OLS in advance of the center median as shown.*
- "Where would transit stops fit it? Or is active transportation just for locals? (e.g. shuttles)"
- "Double load 45 degree parking or parallel and 45 degree (more efficient)" *This comment is suggesting that the 45 degree parking as shown could be modified to increase parking capacity by providing an additional row of parallel parking adjacent to the bike lane.*

CONCEPTS

Town Core Alt. A

Visualizations of the Town Core Alternative A



- No major changes to highway lane alignment
- Add an uphill bike lane
- Formalize "frontage roads"
- Island/median - opportunity for art or landscaping
- Pedestrian walkway on south edge of pavement removes parking
- Crosswalk connections between parking, future community center, and walkway

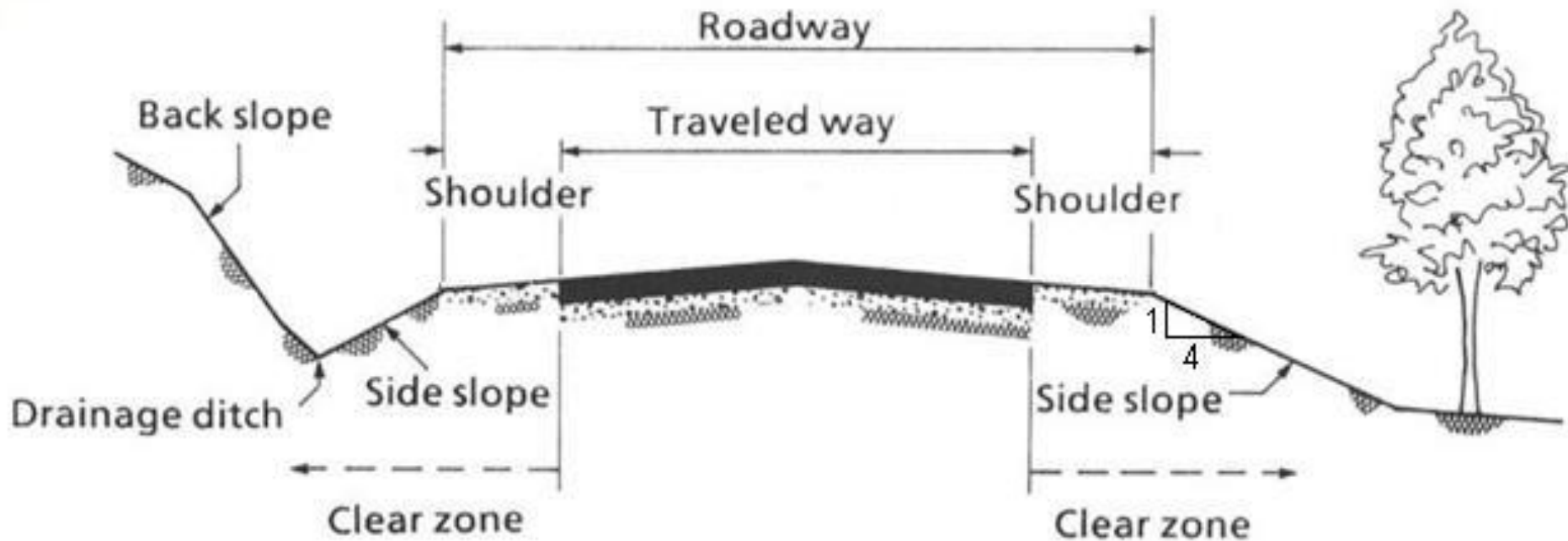
Key Issues

- ✓ ***Snow removal***
- ✓ ***Parking capacity***
- ✓ ***UDOT right-of-way & clear zone requirements***
- ✓ ***Private property encroachment***
- ✓ ***Durability of materials***
- ✓ ***Temporary installation for demonstration***

Clear Zone & Right of way

Clear zone: unobstructed area beyond edge of road

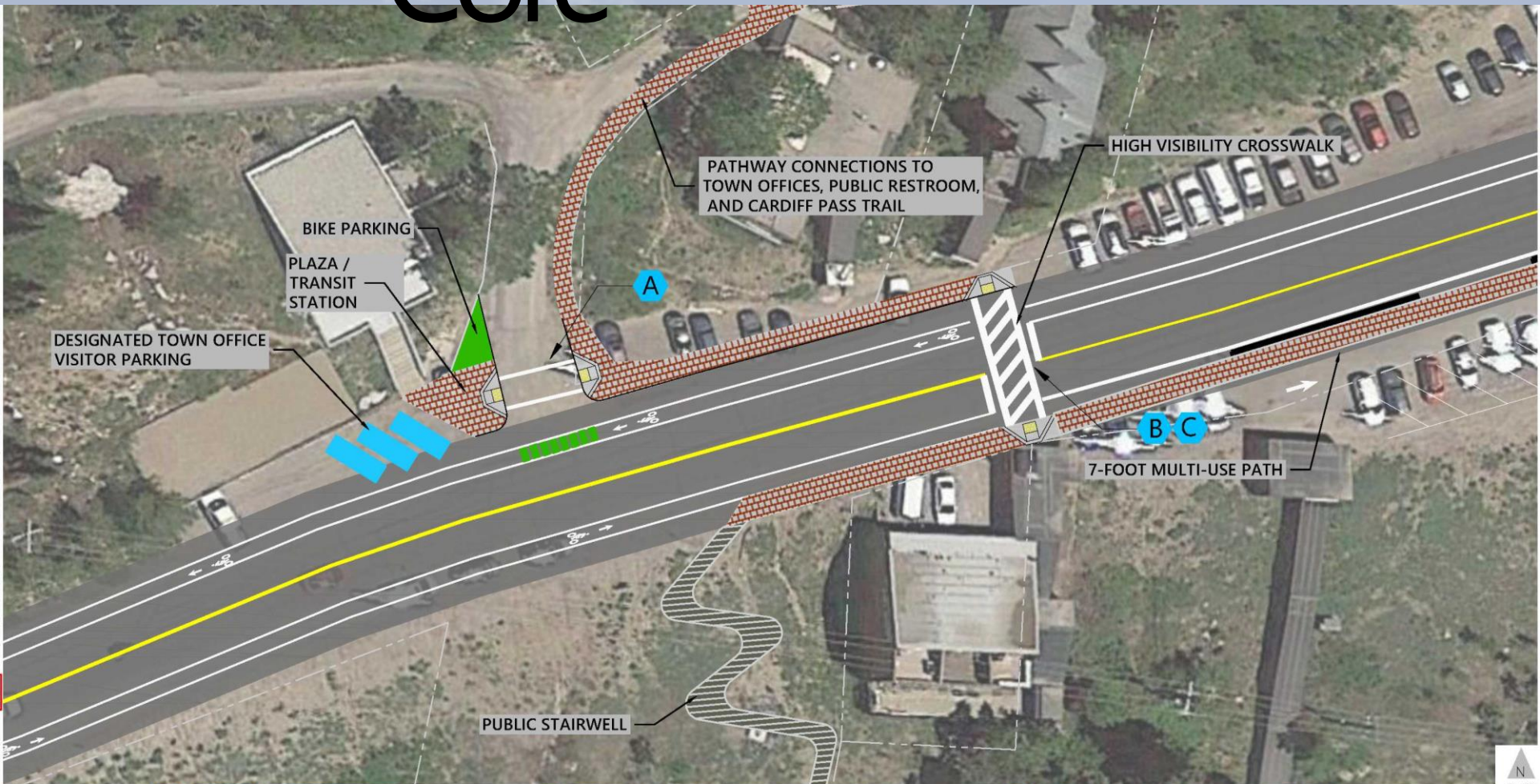
Right of way: property dedicated to transportation



Wildcat Driveway



Town Core



A



B



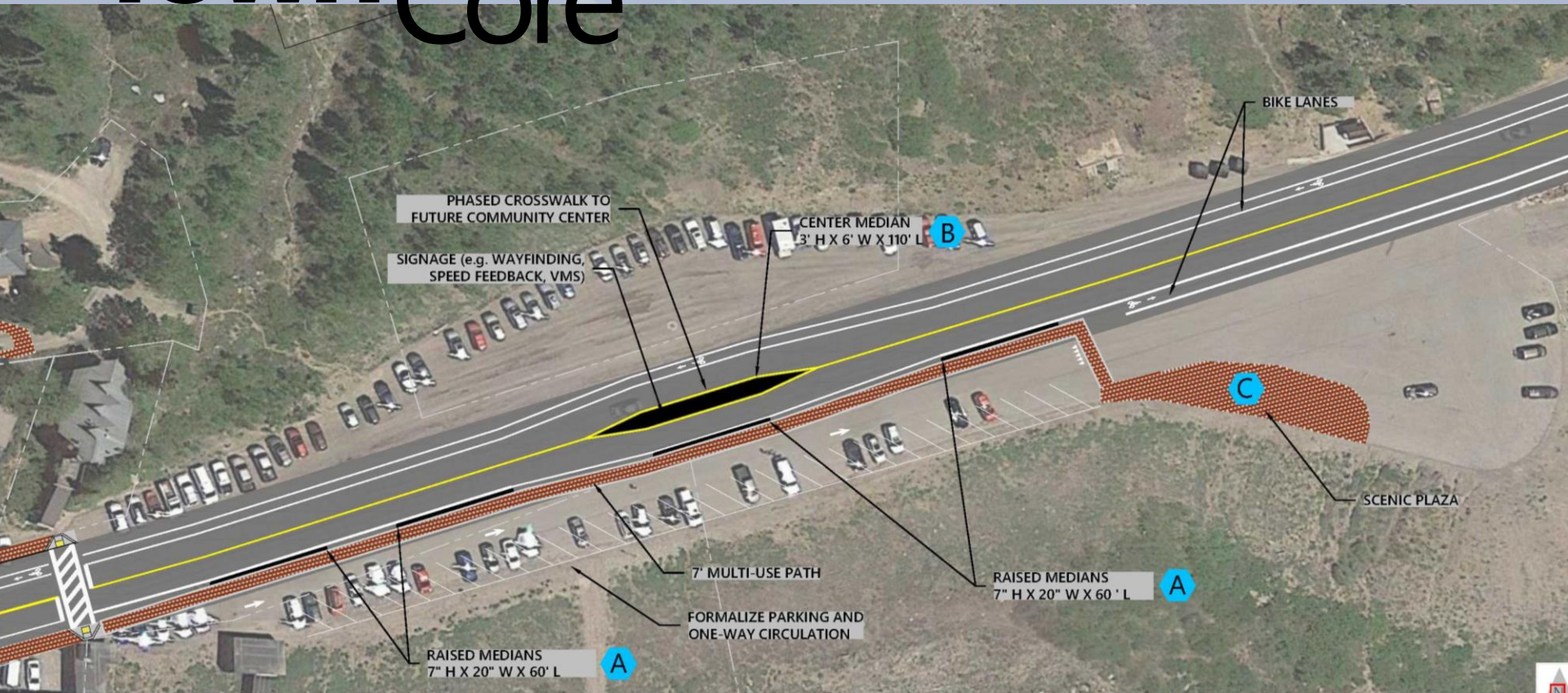
C



DRAFT

2/15/18
Alta Commercial Core
WORKING DRAWING 1

Town Core



A



B



C



DRAFT

2/15/17
Alta Commercial Cor
WORKING DRAWING

Streetscape Improvement Program

This Summer

- UDOT pavement overlay
- Crosswalk (paint)
- Pathway (paint)
- Scenic Plaza (timber barriers, tables)
- Median (jersey barriers)
- Reduce speed limit near Wildcat driveway

Next Year Enhancements

- Crosswalk (thermoplastic, raised/temporary)
- Pathway (delineate w soft hit posts)
- Scenic Plaza (pavement materials)
- Center Median (signage, speed feedback, VMS)
- Gateway feature at Wildcat driveway

3-5 Years Out

- SR-210 EIS Preferred Alternative
- Crosswalk (pavers/concrete, bulb outs)
- Pathway (delineate w curb, concrete, lighting)
- Scenic Plaza (shelters, lighting, art, interpretive panels)
- Center Median (upgrade median, landscaping)
- Wildcat gateway feature upgrade

Next Steps

- ✓ ***Public Open House***
- ✓ ***Coordination w/ UDOT and SR-210 EIS team***
- ✓ ***Coordination w/ Stakeholders & Town Council***
- ✓ ***Final Program Document***